

# Moonstruck bay

Text **ANNA-MARIE SMITH** Project Consultant **SHANEE SMART** Photography **FIONA BARCLAY-SMITH**





**EXPERIENCING THE FULL** moon when it reflects prominently over this setting at Pringle Bay is a privilege not easily forgotten. This dynamic home that overlooks majestic mountain ranges and a spectacular bay-side, is currently managed as a luxury guesthouse.

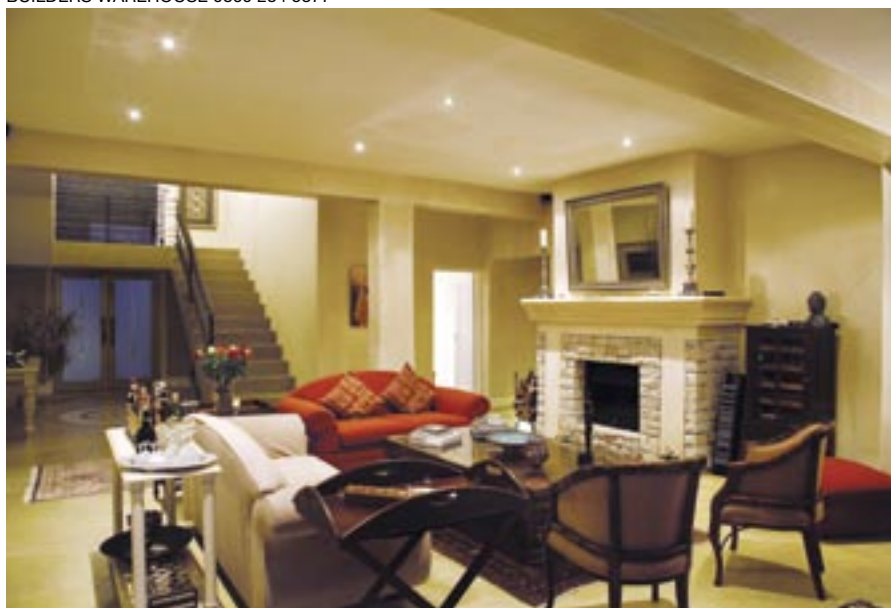
This prime location within the Kogelberg Reserve, located along the southern Indian Ocean coastline, is one of the most densely populated and pristine flower kingdoms in the world, as well as one of very few northern sea-facing bays in the country. Residents pride themselves on

the internationally valued heritage of their environment and the close proximity to Cape Agulhas, which enjoys world class status and is popular amongst foreign visitors and locals alike.

Although the architectural design of this home was focused on the seamless views, it also allows for easy access to all four of the luxury suites - where visitors can enjoy the outdoors in the privacy of their balconies and around the relaxing swimming pool area. Whilst the owners' residential quarters form part of the same dwelling, the guesthouse offers exclusivity and a sense of privacy within the spectacular surroundings of the bay setting.

The owner says that this guesthouse, one of the Allure Collection of guesthouses, was tailor-made to cater exclu-

BUILDERS WAREHOUSE 0860 284 5377



**LEFT:** Builders Warehouse offers the widest selection of home improvement products, as well as complete fireplace solutions, all available under one roof. The company offers gas fireplaces, closed-combustion fireplaces, and an exclusive range of fireplace accessories. Builders Warehouse provides its clients with complete solutions, seven days a week.



## MOONSTRUCK BAY

### CONTACTS:

**Builders Warehouse –**  
A-to-Z home improvement  
0860 284 5377,  
[www.builderswarehouse.co.za](http://www.builderswarehouse.co.za)

**Moonstruck Bay – guesthouse**  
028 273 8162, [www.moonstruck.co.za](http://www.moonstruck.co.za)



sively for the discerning European traveller who is passionate about the local fauna and flora, whale watching, exquisite bird life and safe swimming beaches. All four suites boast generous dimensions and were designed with deep shaded patios, double walls for privacy, and abundant light, perfectly suited to changeable weather conditions. Luxurious furniture and finishes complete each suite in an elegant and comfortable fashion.

The north-facing position of this house creates generous outdoor shelter from the prevailing summer gales, and provides sufficient warmth and a multitude of interior comforts to survive the bleak winter months.

The owner, who decided to leave a stressful corporate environment for this beautiful home and the small village coastal lifestyle, says it is simply unbeatable and not worth exchanging for anything. 🏡